

# Customer Information Sheet

DRAWING No.: S0991-46R

SHEET 2 OF 2

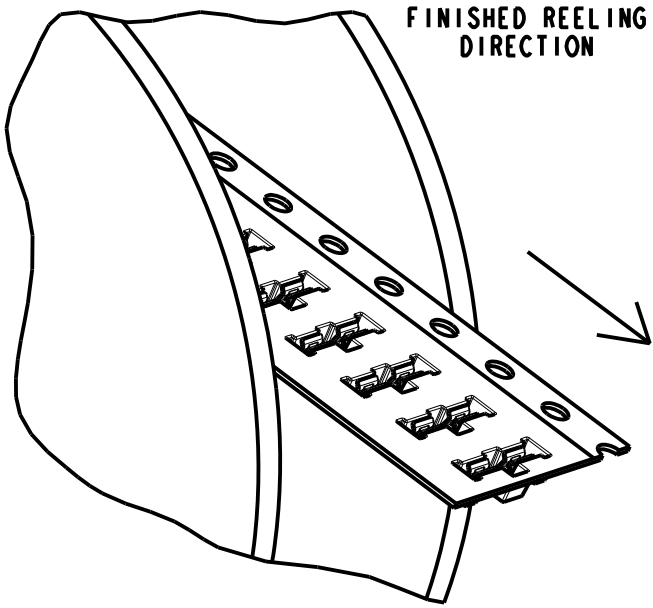
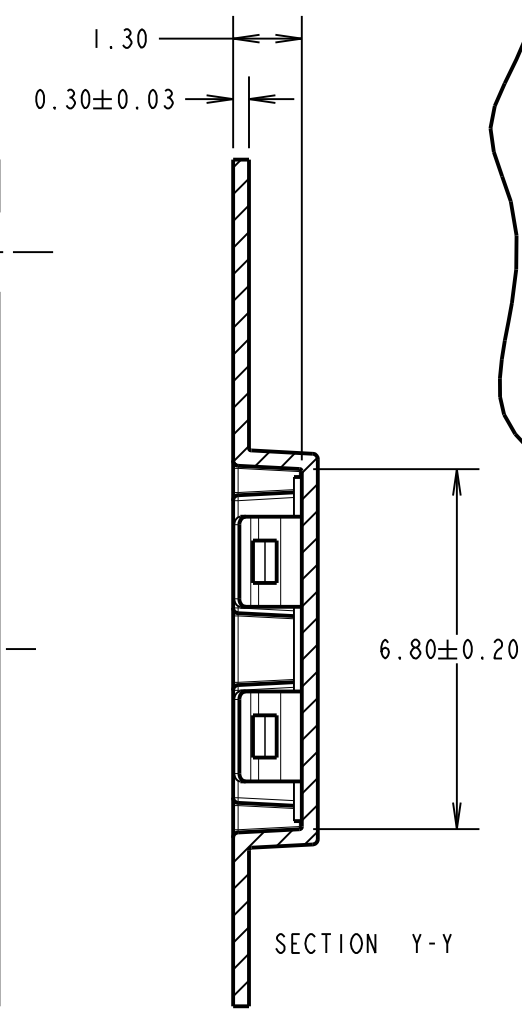
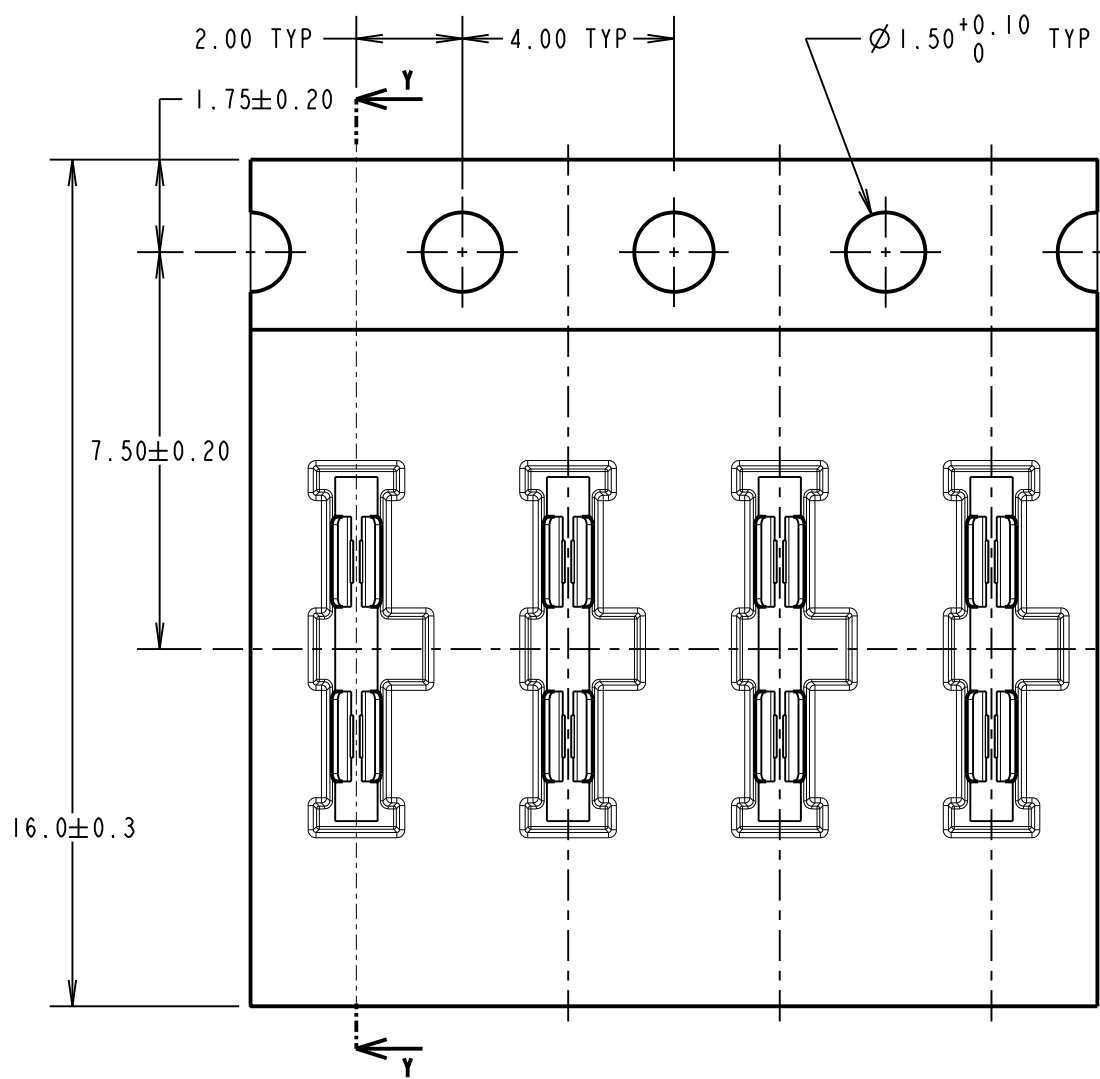
IF IN DOUBT - ASK

©

NOT TO SCALE

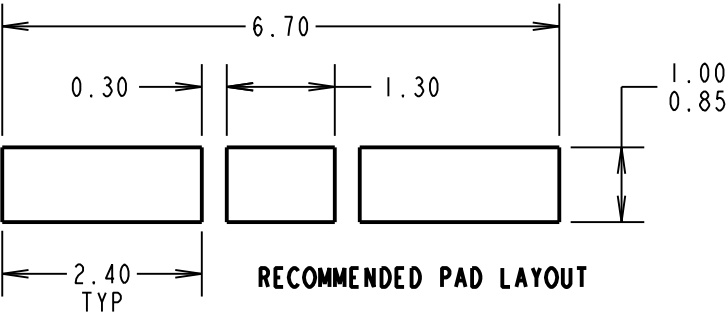
THIRD ANGLE PROJECTION

ALL DIMENSIONS IN mm

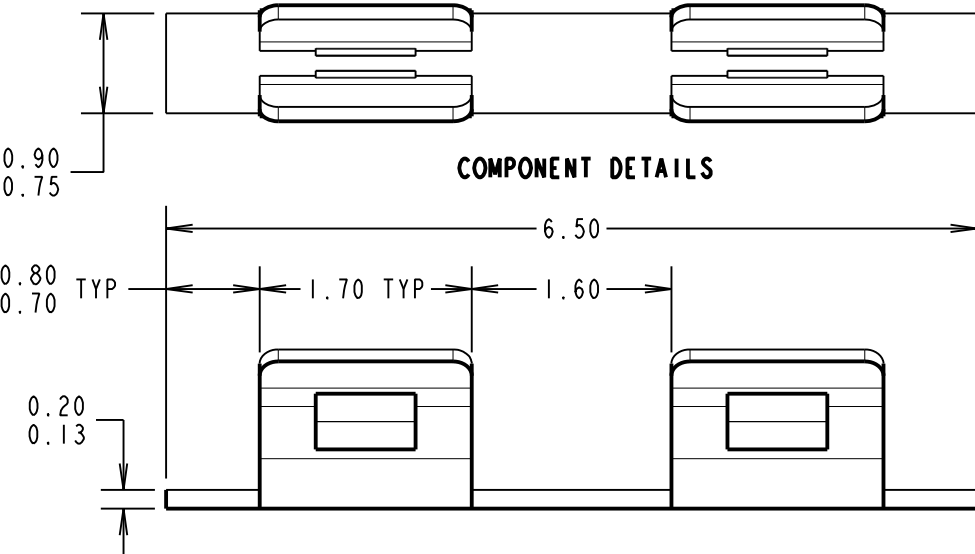


SPECIFICATION:  
MATERIAL:  
CONTACT = STAINLESS STEEL  
FINISH:  
2.0µm - 3.0µm TIN OVER  
0.4µm - 1.2µm NICKEL.  
ELECTRICAL:  
RESISTANCE = 100mΩ MAX  
MECHANICAL:  
INSERTION FORCE = 19.6N MAX  
WITHDRAWAL FORCE = 0.98N MIN  
DURABILITY = 10 CYCLES  
ENVIRONMENTAL:  
OPERATING TEMPERATURE = -25°C TO +150°C  
STORAGE TEMPERATURE = -40°C TO +85°C  
PACKAGING:  
15,000 PARTS IN TAPE AND REEL,  
9 REELS PACKED IN BOX

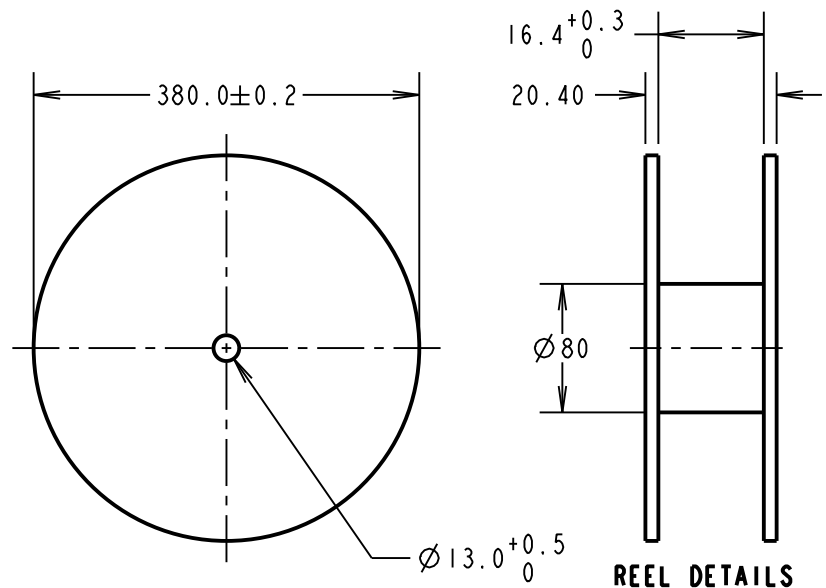
NOTES:  
1. MAXIMUM PERMISSABLE BURR IS 0.03mm MAX.  
2. FOR USE WITH 0.20 - 0.25mm THICK SHIELD CANS.



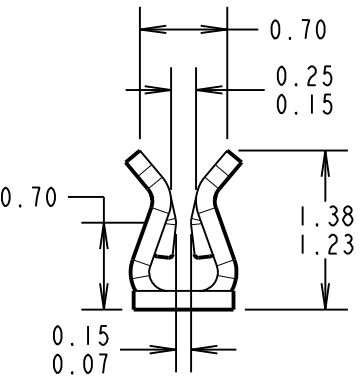
RECOMMENDED PAD LAYOUT



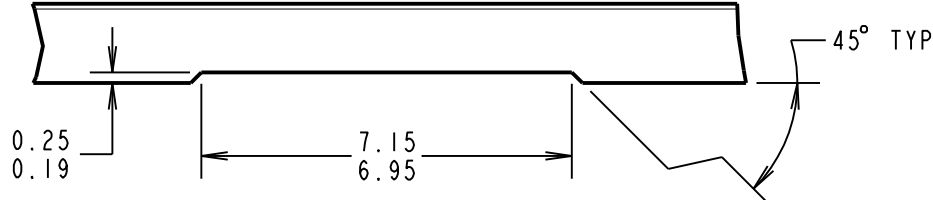
COMPONENT DETAILS



REEL DETAILS



RECOMMENDED SHIELD CAN CUT OUT



MSP	3	30.09.16	13439
NAME	ISS.	DATE	C/NOT
APPROVED:		M.PERREN	
CHECKED:		S.BENNETT	
DRAWN:		S.BENNETT	
CUSTOMER REF.:			
ASSEMBLY DRG:			

**HARWIN**  
www.harwin.com  
technical@harwin.com

THIS DRAWING AND ANY INFORMATION OR DESCRIPTIVE MATTER SET OUT HEREON ARE CONFIDENTIAL AND COPYRIGHT PROPERTY OF THE HARWIN GROUP AND MUST NOT BE DISCLOSED, LOANED, COPIED OR USED FOR MANUFACTURING, TENDERING OR FOR ANY OTHER PURPOSE WITHOUT THEIR WRITTEN PERMISSION.

TOLERANCES  
X. = ±1mm  
X.X = ±0.25mm  
X.XX = ±0.10mm  
X.XXX = ±0.01mm  
ANGLES = ±5°  
UNLESS STATED

MATERIAL:  
STAINLESS STEEL  
FINISH:  
SEE ABOVE  
S/AREA:  
mm<sup>2</sup>

TITLE:  
SURFACE MOUNT RFI  
SHIELD CLIP IN TAPE AND REEL  
DRAWING NUMBER:  
S0991-46R  
SHT  
2 OF 2

# Mouser Electronics

Authorized Distributor

Click to View Pricing, Inventory, Delivery & Lifecycle Information:

Harwin:

S0991-46R