

Customer Information Sheet

DRAWING No.: S1001-46R

SHEET 2 OF 2

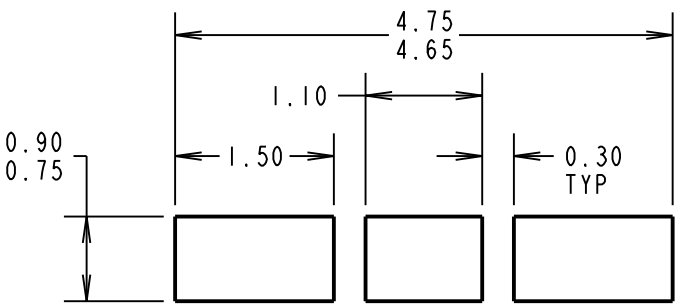
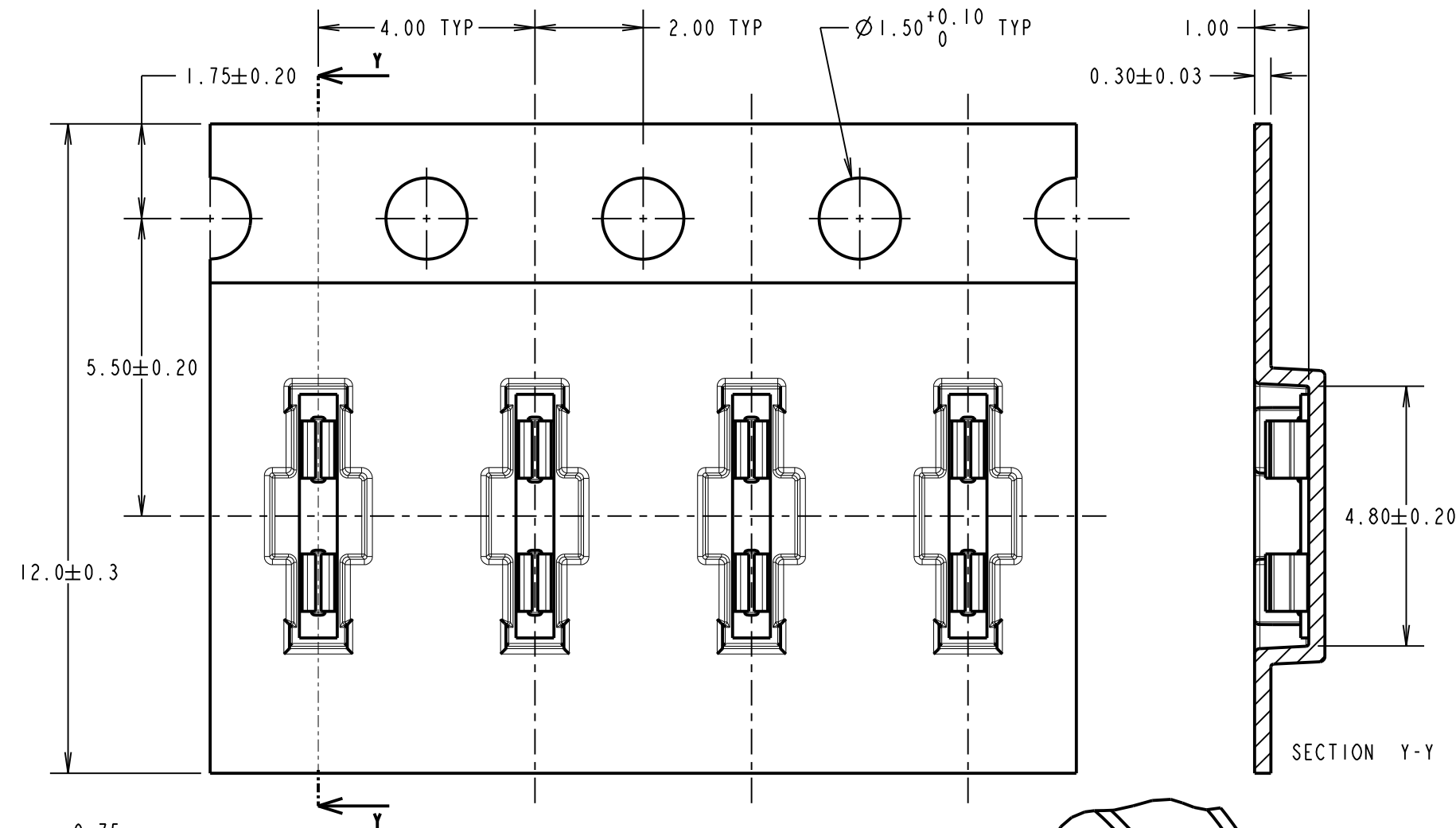
IF IN DOUBT - ASK

©

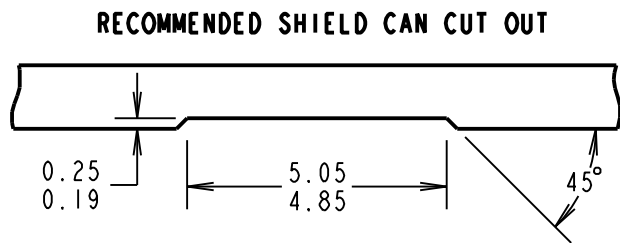
NOT TO SCALE

THIRD ANGLE PROJECTION

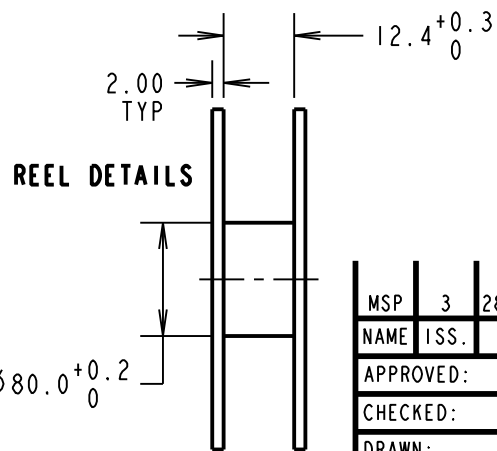
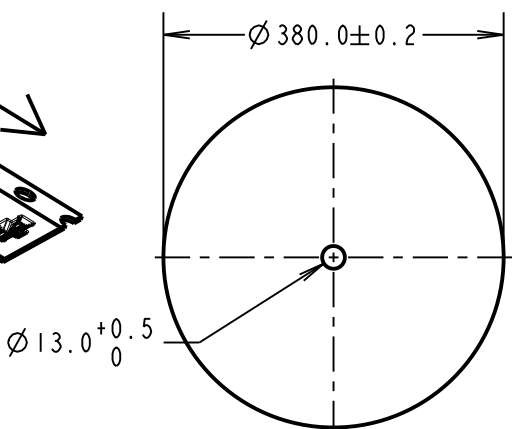
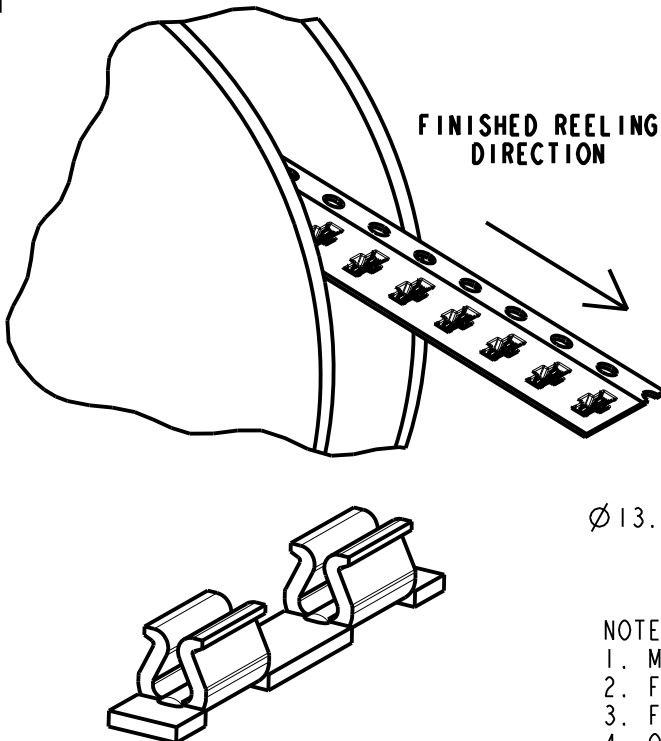
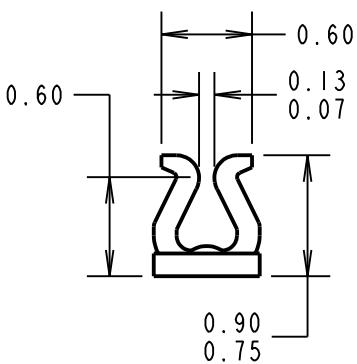
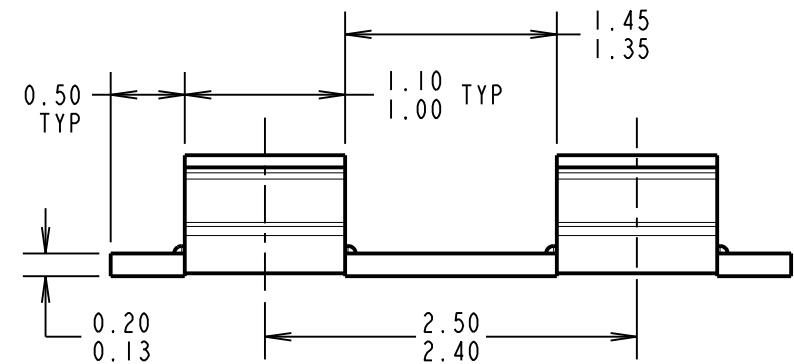
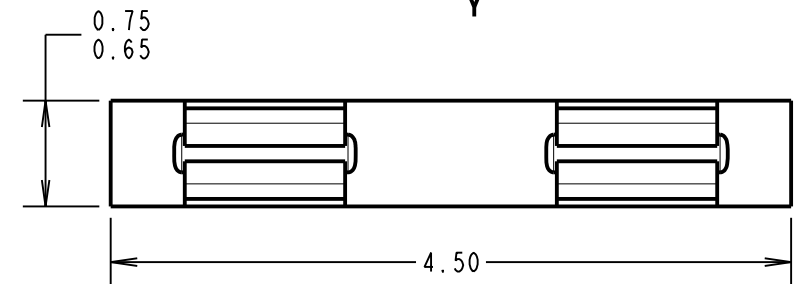
ALL DIMENSIONS IN mm



RECOMMENDED PAD LAYOUT



SPECIFICATION:
MATERIAL:
CONTACT = STAINLESS STEEL
ELECTRICAL:
RESISTANCE = $100\text{m}\Omega$ MAX
MECHANICAL:
INSERTION FORCE = 19.7N MAX
WITHDRAWAL FORCE = 0.98N MIN
DURABILITY = 10 CYCLES
ENVIRONMENTAL:
OPERATING TEMPERATURE = -25°C TO $+150^\circ\text{C}$
STORAGE TEMPERATURE = -40°C TO 85°C
PACKAGING:
TAPE AND REEL PACKED IN BOX



- NOTES:
1. MAXIMUM PERMISSIBLE BURR IS 0.03mm MAX.
 2. FINISH = $2.0\mu\text{m}$ - $3.0\mu\text{m}$ TIN OVER $0.4\mu\text{m}$ - $1.2\mu\text{m}$ NICKEL.
 3. FOR USE WITH 0.15 - 0.20mm THICK SHIELD CANS.
 4. QUANTITY PER REEL = 20,000. 11 REELS PACKED IN BOX.

MSP	3	28.09.16	13439
NAME	ISS.	DATE	C/NOTE
APPROVED:		M.PERREN	
CHECKED:		S.BENNETT	
DRAWN:		S.BENNETT	
CUSTOMER REF.:			
ASSEMBLY DRG:			

HARWIN

www.harwin.com
technical@harwin.com

THIS DRAWING AND ANY INFORMATION OR DESCRIPTIVE MATTER SET OUT HEREON ARE CONFIDENTIAL AND COPYRIGHT PROPERTY OF THE HARWIN GROUP AND MUST NOT BE DISCLOSED, LOANED, COPIED OR USED FOR MANUFACTURING, TENDERING OR FOR ANY OTHER PURPOSE WITHOUT THEIR WRITTEN PERMISSION.

TOLERANCES
X. = $\pm 1\text{mm}$
X.X = $\pm 0.25\text{mm}$
X.XX = $\pm 0.10\text{mm}$
X.XXX = $\pm 0.01\text{mm}$
ANGLES = $\pm 5^\circ$
UNLESS STATED

MATERIAL:

SEE ABOVE

FINISH:

SEE ABOVE

S/AREA:

mm²

TITLE:

SURFACE MOUNT RFI SHIELD CLIP IN TAPE AND REEL

DRAWING NUMBER:

S1001-46R

SHT
2
OF
2

Mouser Electronics

Authorized Distributor

Click to View Pricing, Inventory, Delivery & Lifecycle Information:

[Harwin:](#)

[S1001-46R](#)