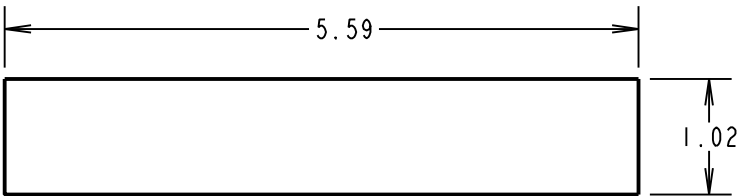
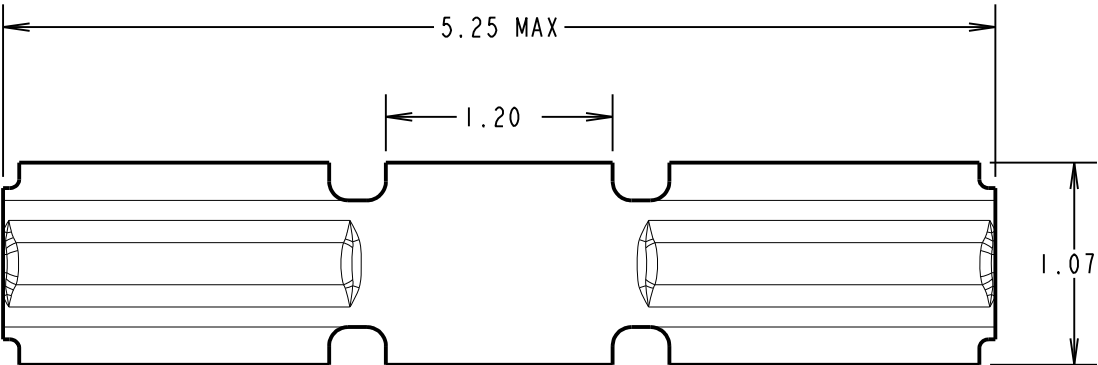
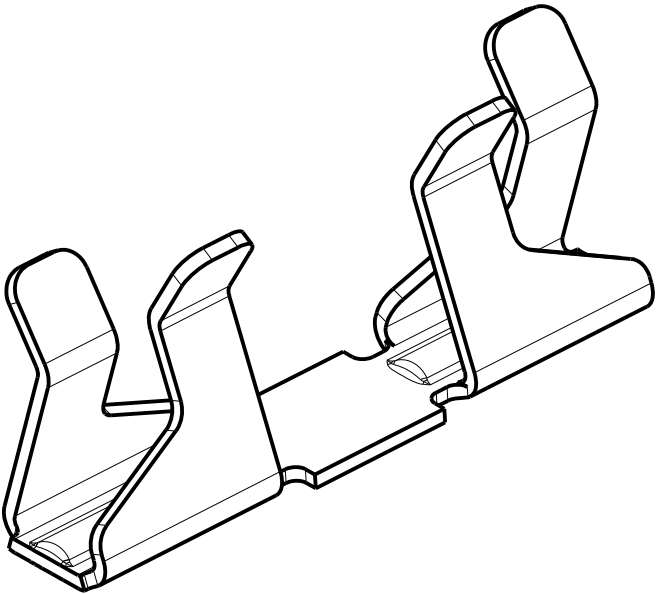
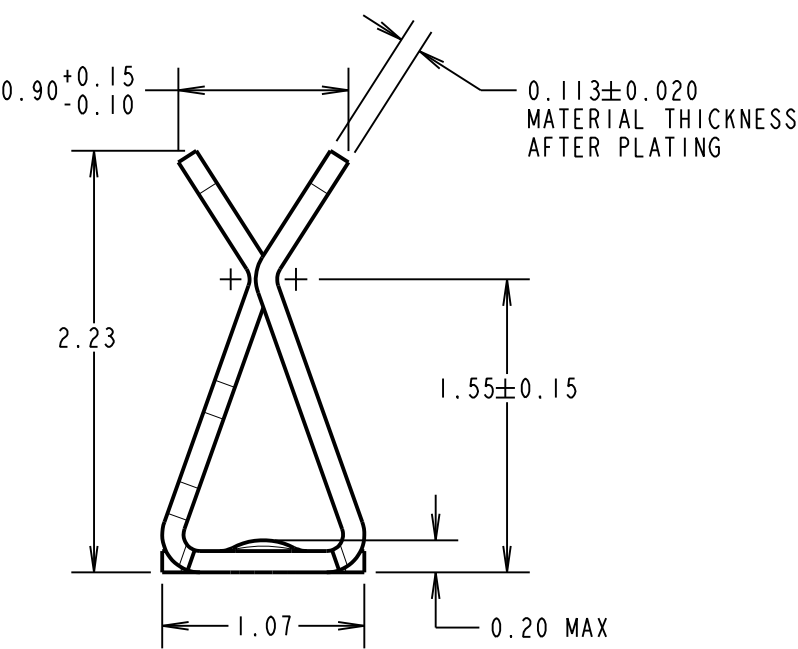
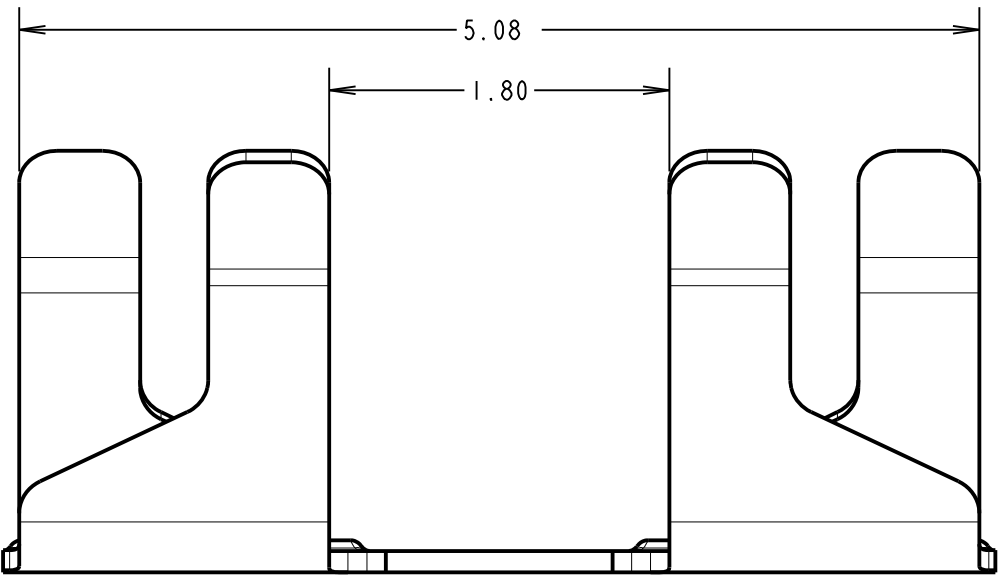


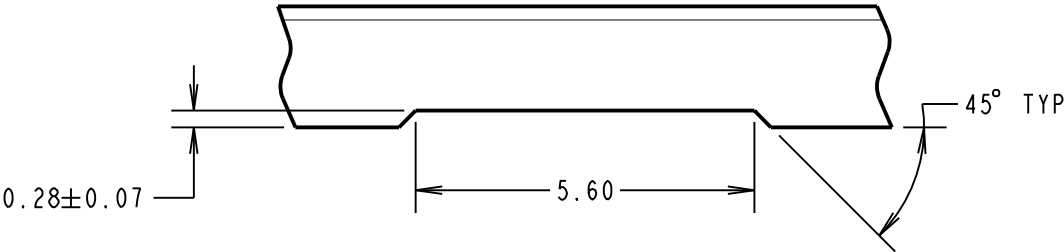
# Customer Information Sheet

DRAWING No.: SI721-46 SHEET 2 OF 2 IF IN DOUBT - ASK © NOT TO SCALE THIRD ANGLE PROJECTION ALL DIMENSIONS IN mm



RECOMMENDED PAD LAYOUT

RECOMMENDED SHIELD  
CAN CUT OUT



COMPONENT SPECIFICATION:  
MATERIAL = BERYLLIUM COPPER  
FINISH = 3µ 100% TIN OVER 2.0µ NICKEL  
ENVIRONMENTAL:  
OPERATING TEMPERATURE = -40°C TO +125°C

PERFORMANCE SPECIFICATION:  
SHIELD THICKNESS = 0.13-0.23mm  
ENGAGEMENT FORCE = 5N MAX.  
DISENGAGEMENT FORCE = 0.35N MIN.  
DURABILITY = 15 ACTUATIONS MIN.  
CONTACT RESISTANCE = 40mΩ MAX.

NOTES:  
1. FOR TAPE AND REELED VERSION, SEE SI721-46R.  
2. PACKING:- 100 COMPONENTS PER BAG.  
NB: COMPONENTS SUPPLIED IN TAPE POCKETS TO  
AVOID DAMAGE DURING STORAGE AND TRANSIT.

WJP	8	23.11.16	13488
NAME	ISS.	DATE	C/NOTE
APPROVED: W. J. PRESTON			
CHECKED: M. PLESTED			
DRAWN: J. ENRIGHT			
CUSTOMER REF.:			
ASSEMBLY DRG:			

**HARWIN**  
www.harwin.com  
technical@harwin.com

THIS DRAWING AND ANY  
INFORMATION OR DESCRIPTIVE  
MATTER SET OUT HEREON ARE  
CONFIDENTIAL AND COPYRIGHT  
PROPERTY OF THE HARWIN  
GROUP AND MUST NOT BE  
DISCLOSED, LOANED, COPIED  
OR USED FOR MANUFACTURING,  
TENDERING OR FOR ANY  
OTHER PURPOSE WITHOUT  
THEIR WRITTEN PERMISSION.

TOLERANCES  
X. = ±1mm  
X.X = ±0.25mm  
X.XX = ±0.10mm  
X.XXX = ±0.01mm  
ANGLES = ±5°  
UNLESS STATED

MATERIAL:  
SEE ABOVE  
FINISH: SEE ABOVE  
S/AREA: mm<sup>2</sup>

TITLE:  
MINI SMT RFI SHIELD CLIP  
(LOOSE)  
DRAWING NUMBER:  
**SI721-46**  
SHT  
2 OF  
2

# Mouser Electronics

Authorized Distributor

Click to View Pricing, Inventory, Delivery & Lifecycle Information:

Harwin:

[S1721-06R](#) [S1721-06](#) [S1721-46R](#) [S1721-46](#)