

Customer Information Sheet

DRAWING No.: S8071-46R

SHEET 2 OF 2

IF IN DOUBT - ASK

©

NOT TO SCALE

THIRD ANGLE PROJECTION

ALL DIMENSIONS IN mm

- NOTES:
1. THIS PRODUCT IS RECOMMENDED FOR USE WITH S07-46 AND S08-46 BRIDGE PINS.
 2. ALL PRODUCT IS RoHS AND REACH COMPLIANT.
 3. PRODUCT IS TAPE AND REELED IN GENERAL ACCORDANCE WITH EIA-481-2 (ELECTRONICS INDUSTRIES ASSOCIATION).
 4. PACKAGING = 10,000 COMPONENTS PER REEL.

SPECIFICATION:

MATERIAL:
CONTACT = STAINLESS STEEL, 0.15mm THICK

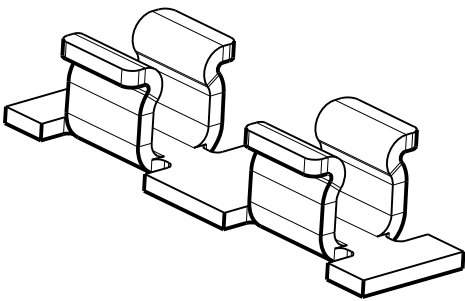
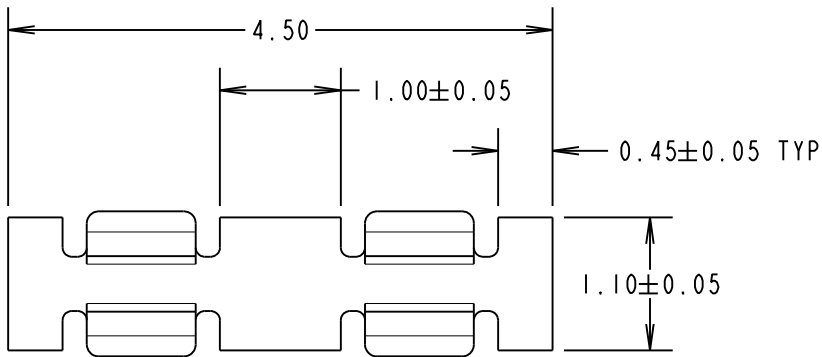
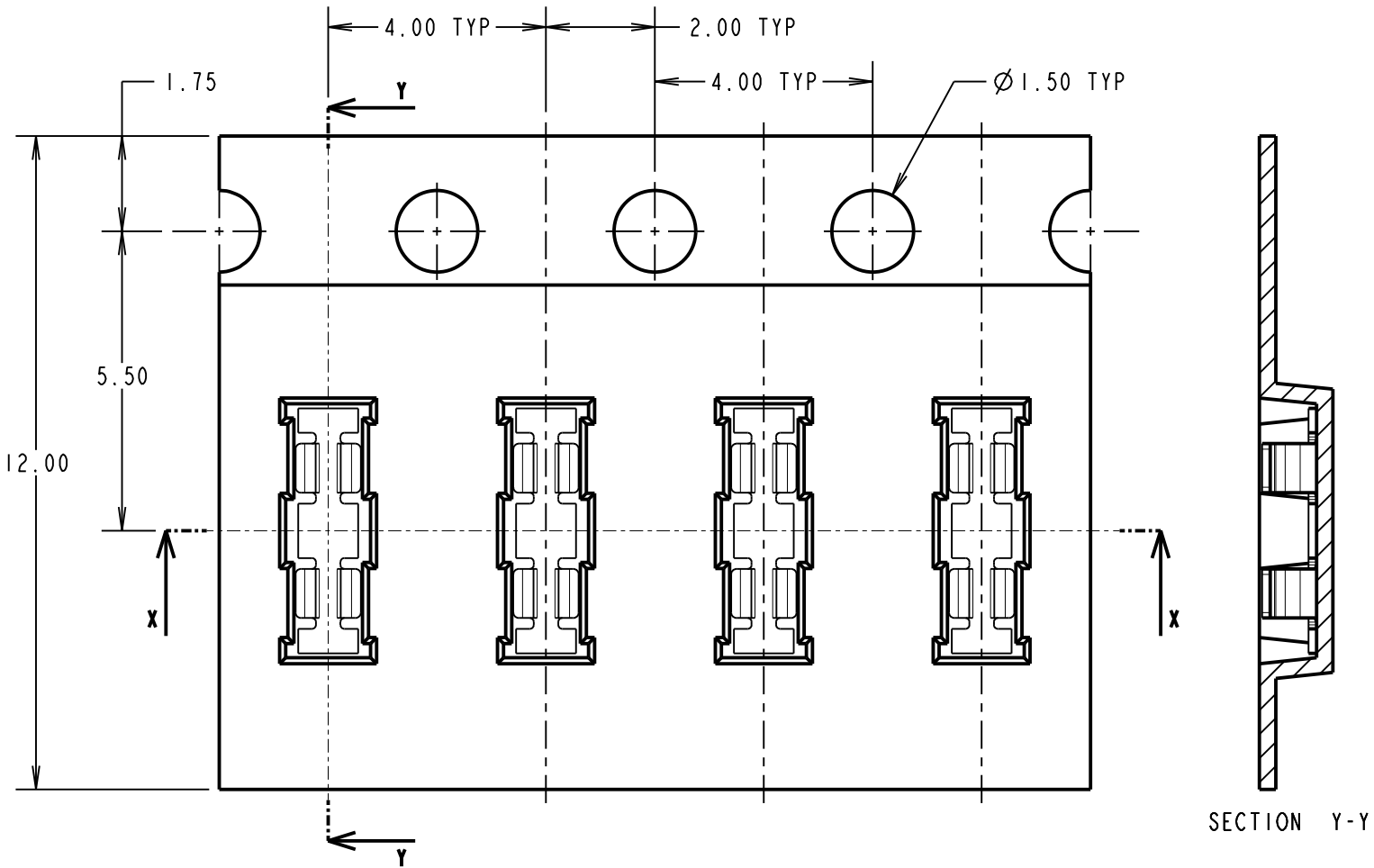
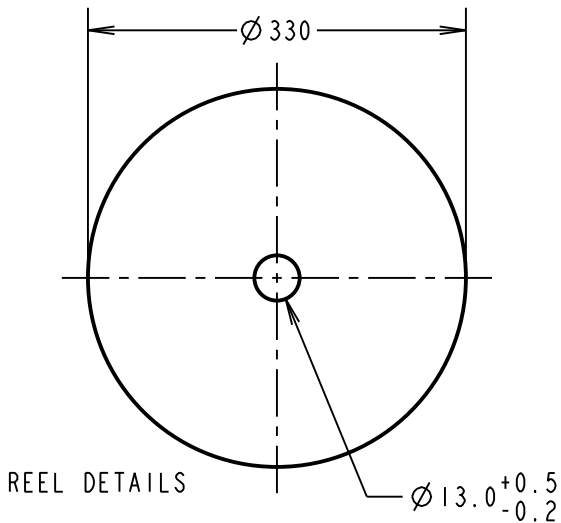
FINISH:
1.0µ - 3.0µ TIN OVER 0.4µ - 1.5µ NICKEL

ELECTRICAL:
CURRENT RATING = 1.5A
VOLTAGE RATING = 250V AC/DC

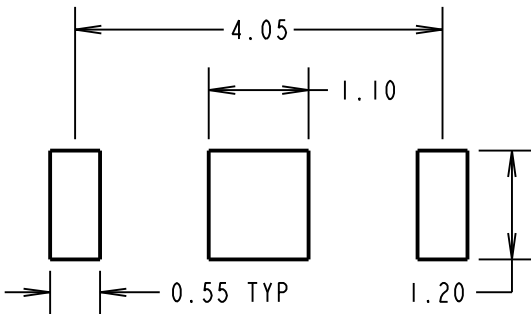
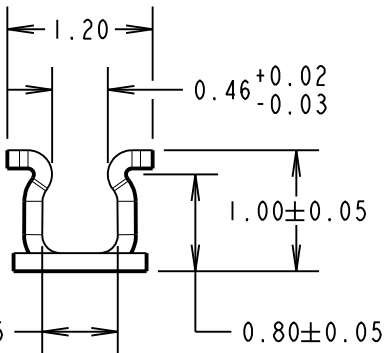
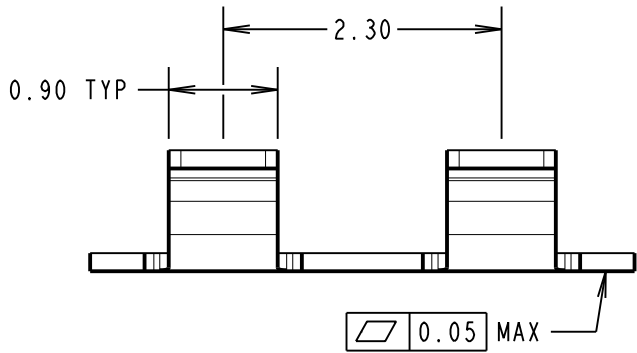
MECHANICAL:
INSERTION FORCE = 25N MAX (INITIAL)
WITHDRAWAL FORCE = 8N MIN (INITIAL)

ENVIRONMENTAL:
OPERATING TEMPERATURE = -40°C TO +85°C

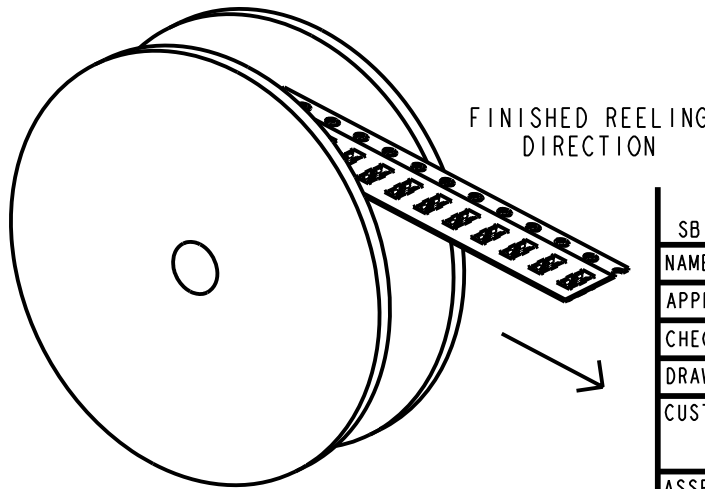
SOLDERING DATA:
SOLDERING HEAT RESISTANCE = 250°C FOR 10 SECONDS MAX



COMPONENT DETAILS



RECOMMENDED PCB LAYOUT
(TOLERANCE = ±0.05)



FINISHED REELING
DIRECTION

SB	I	17.06.15	-----
NAME	ISS.	DATE	C/NOTE
APPROVED:		S.BENNETT	
CHECKED:		M.PLESTED	
DRAWN:		S.BENNETT	
CUSTOMER REF.:			
ASSEMBLY DRG:			

HARWIN

www.harwin.com
technical@harwin.com

THIS DRAWING AND ANY
INFORMATION OR DESCRIPTIVE
MATTER SET OUT HEREON ARE
CONFIDENTIAL AND COPYRIGHT
PROPERTY OF THE HARWIN
GROUP AND MUST NOT BE
DISCLOSED, LOANED, COPIED
OR USED FOR MANUFACTURING,
TENDERING OR FOR ANY
OTHER PURPOSE WITHOUT
THEIR WRITTEN PERMISSION.

TOLERANCES

X. = ±1mm
X.X = ±0.50mm
X.XX = ±0.10mm
X.XXX = ±0.01mm
ANGLES = ±5°
UNLESS STATED

MATERIAL:

SEE ABOVE

FINISH:

SEE ABOVE

S/AREA:

mm²

TITLE:

VERTICAL SMT CONTACT

DRAWING NUMBER:

S8071-46R

SHT
2 OF
2

Mouser Electronics

Authorized Distributor

Click to View Pricing, Inventory, Delivery & Lifecycle Information:

Harwin:

S8071-46R